

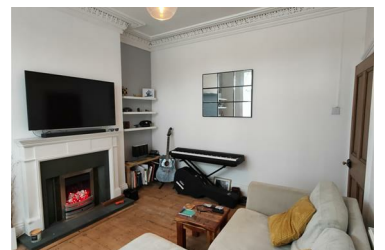


46 Broad Street, Crewe, CW1 3DF

£160,000



This truly impressive four-bedroom, three-storey mid-terraced townhouse is ideally situated within walking distance of Crewe town centre and is offered to the market with no onward chain.



- Four Bedrooms
- NO ONWARD CHAIN
- EPC Rating C
- Easy Access to Nantwich
- Low Maintenance Rear Yard
- Two Reception Rooms
- Walking Distance to Crewe Town Centre
- Close to Leighton Hospital
- Close to Crewe Train Station
- Potential Gross Rental Yield 7%